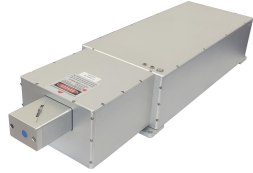


AO-266W 400mW~1W



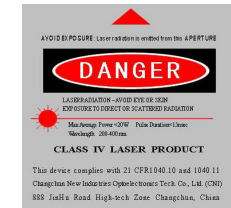
**LD PUMPED ALL-SOLID-STATE
UV AOM Q-SWITCHED LASER**

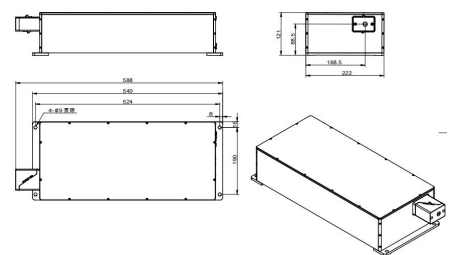
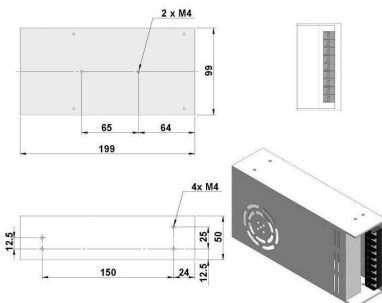
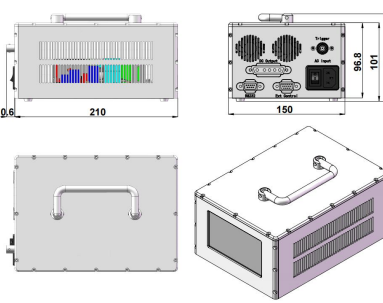

All solid state AOM Q-switched laser at 266 nm has the features of high peak power, high repetition rate, and short pulse duration, which is widely used in marking, carving, measure, research and so on.



SPECIFICATIONS

| | | |
|---|--|---|
| Wavelength (nm) | 266±1 | |
| Operating mode | Acousto-Optic Q-switched | |
| Average power (W) | 500mW@50kHz | 1W@80kHz |
| | Average power (W) = Single pulse energy (mJ) * Rep. rate (kHz) | |
| Single pulse energy (μJ) | >10μJ@50kHz | >15μJ@80kHz |
| Rep. rate (kHz) | 50-200 | 80-200 |
| Pulse width (ns) | ~10 @50kHz | ~15 @80kHz |
| Transverse mode | TEM ₀₀ | |
| Beam Circularity (%) | >85 | |
| Beam divergence, full angle (mrad) | <1.5 | |
| Beam diameter at the aperture (1/e ² , mm) | ~1.0 | |
| Polarization ratio | >100:1, Horizontal | |
| Beam height from base plate (mm) | 88.5 | 90 |
| Warm-up time (minutes) | <10 | |
| Cooled method | Water Cooled | |
| Operating temperature (°C) | 10~35 | |
| Supply Voltage | DC 24V/13A (PSU-24/ PSU-24-P optional) | DC 30V/18.6A (PSU-30/ PSU-36-P optional) |



| | | | |
|--|---|--|---|
| <p>AO-266W-500mw <i>Integrated electronics</i></p> | <p>PSU-24^① (Power supply 100-240VAC)</p> | <p>PSU-24-P^② (Power supply 100-240VAC)</p> | <p>Water Chiller (WCH-580)</p> |
|  <p>588 (L) × 222 (W) × 121 (H) mm³, 20 kg</p> |  <p>DC24V 13A; 199 (L) × 99 (W) × 50 (H) mm³, 0.9 kg</p> |  <p>220.6 (L) × 150 (W) × 112.5 (H) mm³, 2.75 kg</p> |  <p>369.8 (L) × 258.4(W) × 240.6 (H) mm³, 10.5 kg</p> |

| AO-266W-1W <i>Integrated electronics</i> | PSU-30 ^① (Power supply 100-240VAC) | PSU-36-P ^② (Power supply 100-240VAC) | Water Chiller (WCH-580) |
|---|---|--|--|
| <p>695 (L) × 195 (W) × 124 (H) mm³, 21.15 kg</p> | <p>DC30V 18.6A; 230 (L) × 127 (W) × 40.5 (H) mm³, 1 kg</p> | <p>220.6 (L) × 150 (W) × 112.5 (H) mm³, 2.75 kg</p> | <p>369.8 (L) × 258.4 (W) × 240.6 (H) mm³, 10.5 kg</p> |

Note:

- ① Adaptor for 24V 13A or 30V/18.6A.
- ② Adaptor for 24V/13A or 30V/18.6A, and power control function is included.