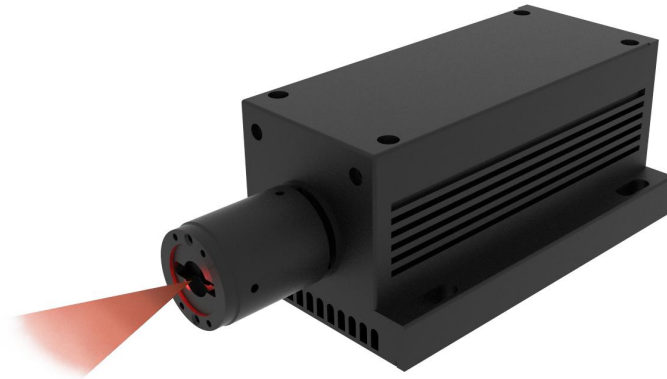


## ***MDL-H Series Line Laser***



### ***MDL-H Series Line Laser***

The laser is made features of high power, high straightness, perfect line uniformity and high stability to adapt to various environments.

The user can choose IR or red wavelengths depending on the application and material to be inspected.

MDL-H Series Line Laser with its stable performance, high reliability works professionally in road detection, railway detection, tunnel and high-speed rail detection, etc.

### ***FEATURES***

- Output power up to 5W
- Wavelengths from 750 to 1060nm
- TTL modulation up to 30kHz
- Analog modulation up to 30kHz

### ***APPLICATIONS***

- Road detection
- Railway detection
- Tunnel detection
- High-speed rail detection



## SYSTEM SPECIFICATION\*

Wavelength	nm	<b>750</b>	<b>808</b>	<b>1060</b>
Wavelength tolerance	nm (typical)	<b>±5</b>	<b>±5</b>	<b>±10</b>
Output power	W	<b>2-5</b>	<b>2.5-5</b>	<b>1.5-5</b>
Power stability (rms, over 4hours)		<1%, <2%, <3%		
Line angle		5°, 7°, 10°, 15°, 30°, 45°, 50°, 60°, 75°, 90°, 100° (Other angles are available upon request)		
Laser operation mode		CW		
Luminance uniformity		80%		
Straightness error		Less than 0.5%		
85% peak power proportion in corss-section		95%		
Temperature & power stability		Less than 0.5%		
Expected lifetime	hours	10,000		

## ELECTRICAL SPECIFICATIONS

Power supply		PSU-H-LED	PSU-H-FDA
Input voltage		100-240V AC	100-240V AC
Modulation		TTL modulation Analog modulation	
Modulation frequency	kHz	TTL up to 30 Analog up to 30	

## ENVIRONMENTAL CONDITIONS

Operating temperature	°C	10°C to 35°C
Storage temperature	°C	-20 °C to +80 °C
Humidity	%	< 90 %, non-condensing

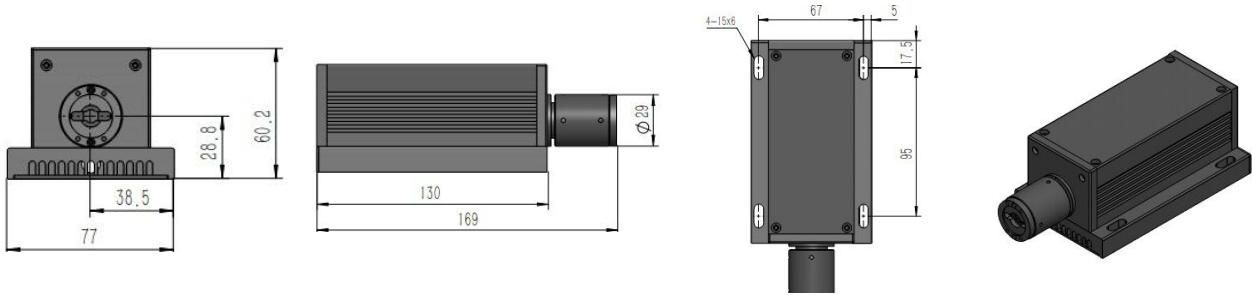
## MECHANICAL SPECIFICATIONS

Dimensions of laser head	mm	169 x 77 x 60.2	
Dimensions of power supply	mm	PSU-H-LED 277 x 145 x 106	PSU-H-FDA 275 x 145 x 104
Material		Aluminum	

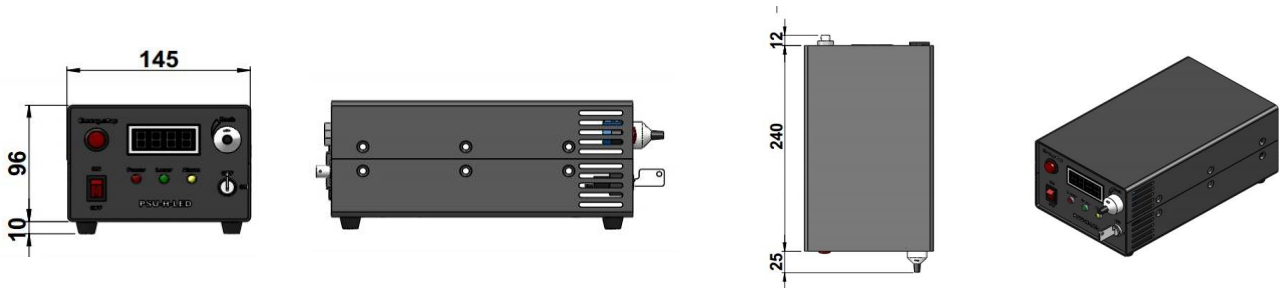
## KEYNOTES

\*All testing data under the conditions of temperature 25°C.

DIMENSIONS OF LASER HEAD (mm):



DIMENSIONS OF POWER SUPPLY FOR PSU-H-LED (mm):



DIMENSIONS OF POWER SUPPLY FOR PSU-H-FDA (mm):

