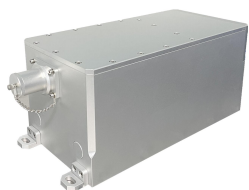


**MLL-W-457-Water/1000~4000mW**



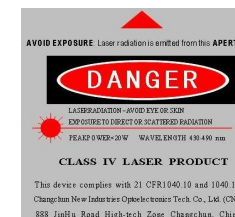
**LD PUMPED ALL-SOLID-STATE  
LOW NOISE BLUE LASER**

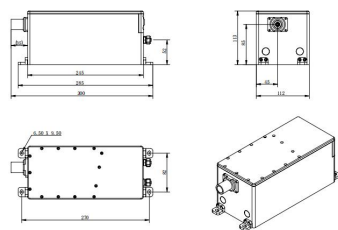
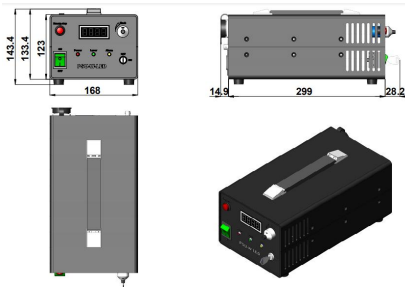
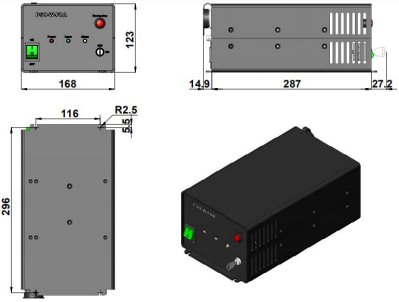
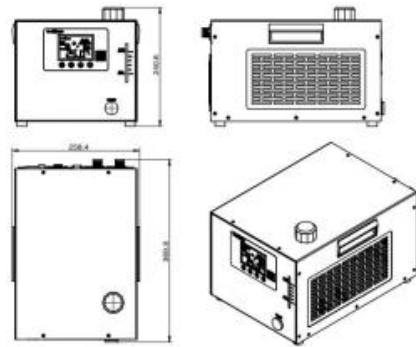
All solid state 457nm low noise laser is made features of ultra compact, long lifetime and easy operating, which is used in fluorescence sensors, Raman spectrum, holography, laser printing, interference, holography, laser printing, chip inspection, physics experiment, etc.



**SPECIFICATIONS**

Wavelength (nm)	457±1	
Operating mode	CW	
Output power (mW)	>1000, 2000, 3000, ..., 4000	
Power stability (rms, over 4 hours)	<5%, <3%, <1%	
Transverse mode	TEM <sub>00</sub>	
Noise of amplitude (rms, 1Hz~20MHz)	<1%	
M <sup>2</sup> factor	<1.2	
Beam divergence, full angle (mrad)	<1	
Beam diameter at the aperture (1/e <sup>2</sup> , mm)	~2	
Warm-up time (minutes)	<10	
Polarization ratio	>100:1, Horizontal(Vertical Optional)	
Beam height from base plate (mm)	85	
Cooled method	Water Cooled	
Operating temperature (°C)	10~35	
Power supply (90-264VAC)	PSU-W-LED	PSU-W-FDA
TTL / Analog modulation	TTL or Analog with 1Hz-1kHz 1kHz-10kHz, 10kHz-30kHz optional	
Expected lifetime (hours)	10000	
Warranty period	1 year	



MLL-W-457-Water	PSU-W-LED	PSU-W-FDA	Water Chiller (WCH-580)
 <p style="text-align: center;"><b>300(L) × 112 (W) × 113 (H) mm<sup>3</sup>, 5.0 kg</b></p>	 <p style="text-align: center;"><b>342.1 (L) × 168 (W) × 143.4 (H) mm<sup>3</sup>, 4.2 kg</b></p>	 <p style="text-align: center;"><b>329.1 (L) × 168 (W) × 123 (H) mm<sup>3</sup>, 4.1 kg</b></p>	 <p style="text-align: center;"><b>369.8 (L) × 258.4 (W) × 240.6 (H) mm<sup>3</sup>, 10.5 kg</b></p>