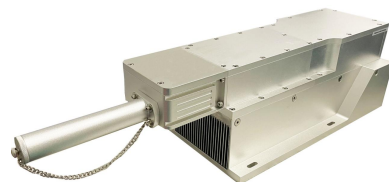




MPL-W-266/5~30μJ/50~400mW



LD PUMPED ALL-SOLID-STATE UV LASER

All solid state 266nm UV laser is made features of ultra compact, long lifetime, and easy operating, which is widely used in UV curing, micro-electronics, CD carving, laser medical treatment, scientific experiment, etc.



SPECIFICATIONS

Wavelength (nm)		266 ± 1
Operating mode		Passively Q-switched
Average power (mW)		50~400
Single pulse energy (μJ)		5~30
Pulse duration (ns)		~5
Peak power (kW)		1~6
Rep. rate (kHz)	FIXED	Setting up one fixed rep. rate internal between 1kHz-4kHz with stable pulse energy, pulse duration and pulse period.
	EXT TRIG	1kHz-4kHz by external trigger with stable pulse energy, pulse duration and pulse period.
	QCW	QCW state with one rep. rate between 10kHz-20kHz.
Ave power stability		<3%, <5%
Transverse mode		Near TEM ₀₀
Beam divergence, full angle (mrad)		<2.0
Beam diameter at the aperture (1/e ² , mm)		~2.0
Warm-up time (minutes)		<10
Beam height from base plate (mm)		93.3
Operating temperature (°C)		10~35
Power supply (90-264VAC)		PSU-W-LED PSU-W-FDA
Warranty period		1 year
Remarks		Please Note: because of the Walk-off effect of Nonlinear crystals, the beam quality of UV laser is not so good as that of 1064/532nm laser.



Laser head (MPL-W-266)	Power supply	
	PSU-W-LED	PSU-W-FDA
<p>494 (L) × 140 (W) × 124 (H) mm³, 6.1 kg</p>	<p>335 (L) × 168 (W) × 133 (H) mm³, 4.2 kg</p>	<p>323 (L) × 168 (W) × 123 (H) mm³, 4.1 kg</p>