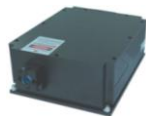


OEM-XD-637/640/642/3-4W



**OEM RED DIODE LASER  
AT 637/640/642nm**

It features ultra compact design, long lifetime, cost-effectiveness and easy operation. They are widely used in measurement, spectrum analysis, laser lighting show, etc.



SPECIFICATIONS

Central wavelength (nm)	637±5/ 640±5/ 642±5
Operating mode	CW
Output power (mW)	3000, 4000
Power stability (rms, over 4 hours)	<1%, <2%, <3%
Polarization direction	Horizontal+Vertical
Beam diameter at the aperture (1/e <sup>2</sup> , mm)	~5×4
Beam divergence, full angle (mrad)	<2.6×1.2
Warm-up time (minutes)	<5
Beam height from base plate (mm)	35
Operating temperature (°C)	25+/-3
Driver (12VDC 15A)	PSU-PN7-OEM
TTL / Analog modulation	TTL or Analog with 1Hz-1kHz 1kHz-10kHz, 10kHz-30kHz optional
Expected lifetime (hours)	10000
Warranty	1 year



OEM-XD-637/640/642	PSU-PN7-OEM	Accessory (Power supply 100-240VAC)
<p>222(L)×150(W) ×61(H) mm<sup>3</sup>, 4.5kg</p>	<p>170(L) ×75(W) ×31 (H) mm<sup>3</sup>, 0.5kg</p>	<p>177.5(L)×62(W) ×30(H) mm<sup>3</sup>, 0.5kg</p>