

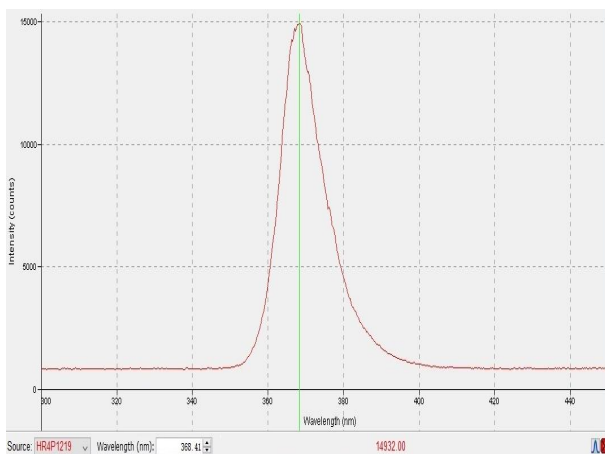


Performance Advantages:

- ◆ High brightness, high efficiency
- ◆ Precise adjustment of brightness
- ◆ Support TTL control output
- ◆ Customizable

Product Model	SLE-I
Channel	1
Wavelength	365nm
Power	1000mW
Control Mode	0~100% dimming, accuracy of 1%
ON/OFF Response Times	Rising/ Descending Edge (10%~90%) < 50us
Operating Mode	Continuous Output, Default TTL Modulation (Analog Modulation Optional)
Control Mode	Support RS232 host computer control
Control Options	SMA - External trigger TTL signal (external trigger analog modulation optional) Serial Interface (RS232) - Light Output ON/OFF and brightness adjusting Manual control box (optional) - Light Output ON/OFF and brightness adjusting
Optical Transmission	3mm diameter liquid optical waveguide (LLG)
Operating Temperature	10~35°C
Power Input	DC12V
Cooled Method	Air Cooled
Size	171mmx114mmx100mm (参考)
Warranty	2 Years

Spectrogram:



Dimensions:

